

$$\frac{L + 2d + \sqrt{S} - F}{2.37} = \underline{6}$$

● THE NORTH AMERICAN SIX-METRE CHAMPIONSHIPS 1970

Cover:

THE MEASURER HAVING TAKEN ALL THE MEASUREMENTS ENUMERATED AND BEING SATISFIED THEY ARE CORRECT, SHALL RECORD EACH MEASUREMENT TAKEN IN A MEASUREMENT BOOK.

TO FIND THE RATING OF THE YACHT, HE WILL ADD CORRECT LENGTH L, 2d, AND THE SQUARE ROOT OF SAIL AREA, S, THEN SUBTRACT FREEBOARD, F, AND DIVIDE BY 2.37. THE RESULT WILL BE THE RATING.

The Rating Formula of the International Six-Metre Class

**THE NORTH AMERICAN SIX-METRE CHAMPIONSHIPS
and**

The Canadian-American International Team Races

**SPONSORED BY THE PUGET SOUND SIX-METRE FLEET
WITH THE COOPERATION OF THE CORINTHIAN AND
SEATTLE YACHT CLUBS**

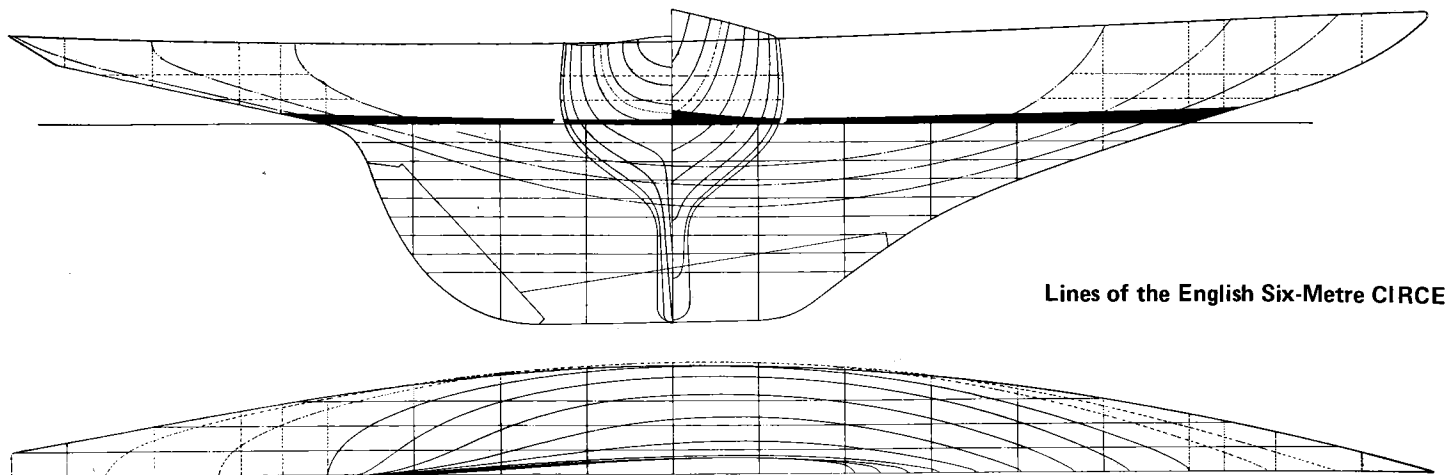
**SHILSHOLE BAY MARINA,
SEATTLE WASHINGTON
AUGUST 29, 30, AND 31,
SEPTEMBER 1 AND 2**

PROGRAM

- FRIDAY, AUGUST 28** 2:00 P.M. Registration and measurement (until 6:30 P.M.)
- 7:00 P.M. No host cocktail party and dinner at the home of Mr. and Mrs. Wood Lyda, 3614 Hunts Point Road, Bellevue
- SATURDAY, AUGUST 29** 8:30 A.M. Registration and measurement
- 9:30 A.M. Skippers meeting
- 11:00 A.M. First Race of The North American Six-Metre Championships. The Second Race will start 30 minutes after the last boat finishes (depending upon wind conditions)
- 7:30 P.M. No host cocktail party at the Seattle Yacht Club
- SUNDAY, AUGUST 30** 10:00 A.M. Third Race of The North American Championships. The Fourth Race will start 30 minutes after the last boat finishes (depending upon wind conditions)
- 8:30 P.M. Cocktail party hosted by Mr. Bill Taylor, Bayside Place Apartments, 9901 NE 1st, Bellevue
- MONDAY, AUGUST 31** 10:00 A.M. Fifth Race of The North American Championships. If earlier races have been cancelled, a second race will be sailed 30 minutes after the last boat finishes
- 2:30 P.M. First Team Race of the Canadian-American Series. This race will not be sailed until all North American Championship races have been completed. The team race will not be started unless both teams have selected their representatives after the completion of the final Championship race
- 7:30 P.M. Barrel party and Trophy Banquet at Clark's Windjammer Restaurant, Shilshole (purchase of tickets for the Banquet by Sunday night is requested)
- TUESDAY, SEPTEMBER 1** 10:00 A.M. This start is reserved for a final race for The North American Championships. If fourth or fifth race was not started by 12:00, the Series will be called on the basis of races sailed — minimum of three. If The North American Series has been completed, this start will be for a Canadian-American Team Race
- WEDNESDAY, SEPTEMBER 2** 10:00 A.M. Team Race start as required. Barrel party after completion of the Team Race Series

THE PURPOSE OF THE CHAMPIONSHIP SERIES IS TO PROMOTE THE DEVELOPMENT OF THIS INTERNATIONAL CLASS, TO BROADEN THE SCOPE OF COMPETITION, TO ENCOURAGE SPORTSMANSHIP, AND TO EXTOL THE VIRTUES OF THESE BEAUTIFUL SAILING CRAFT.





Lines of the English Six-Metre CIRCE

THE SHEER OF THE YACHT TO BE A FAIR CONTINUOUS CONCAVE CURVE.

The Rating Rule

GENERAL INSTRUCTIONS

ELIGIBILITY

To encourage all possible participation in these races, it has been deemed advisable to ease the eligibility requirements to allow certain older boats or some which have been modified with cruising accommodations to enter the Series, as long as all boats are basically Six-Metre yachts. Therefore, to be eligible to race, a recognized Six-Metre shall be a yacht which was designed to, and has been measured under, the International Rule, and which shall hold a valid Measurement Certificate issued by a competent and recognized Measurer or Yachting organization. Any such yacht shall qualify to race unless its measurements have been altered in violation of the original or prevailing Rule. A yacht shall not be considered disqualified or ineligible to race:

- (a) If the hull no longer measures into the Rule because of sagging, hogging, or soaking of water due to age, or
- (b) Because of structural additions made for the purpose of strengthening the hull and deck, or other additions such as cabins, bunks, head, sinks, and the like, which only increase weight and water line length but no other measurements. An inboard engine is not permitted.
- (c) If required items of equipment, such as anchors and lines, have been substituted for more modern equipment of equal or higher quality.

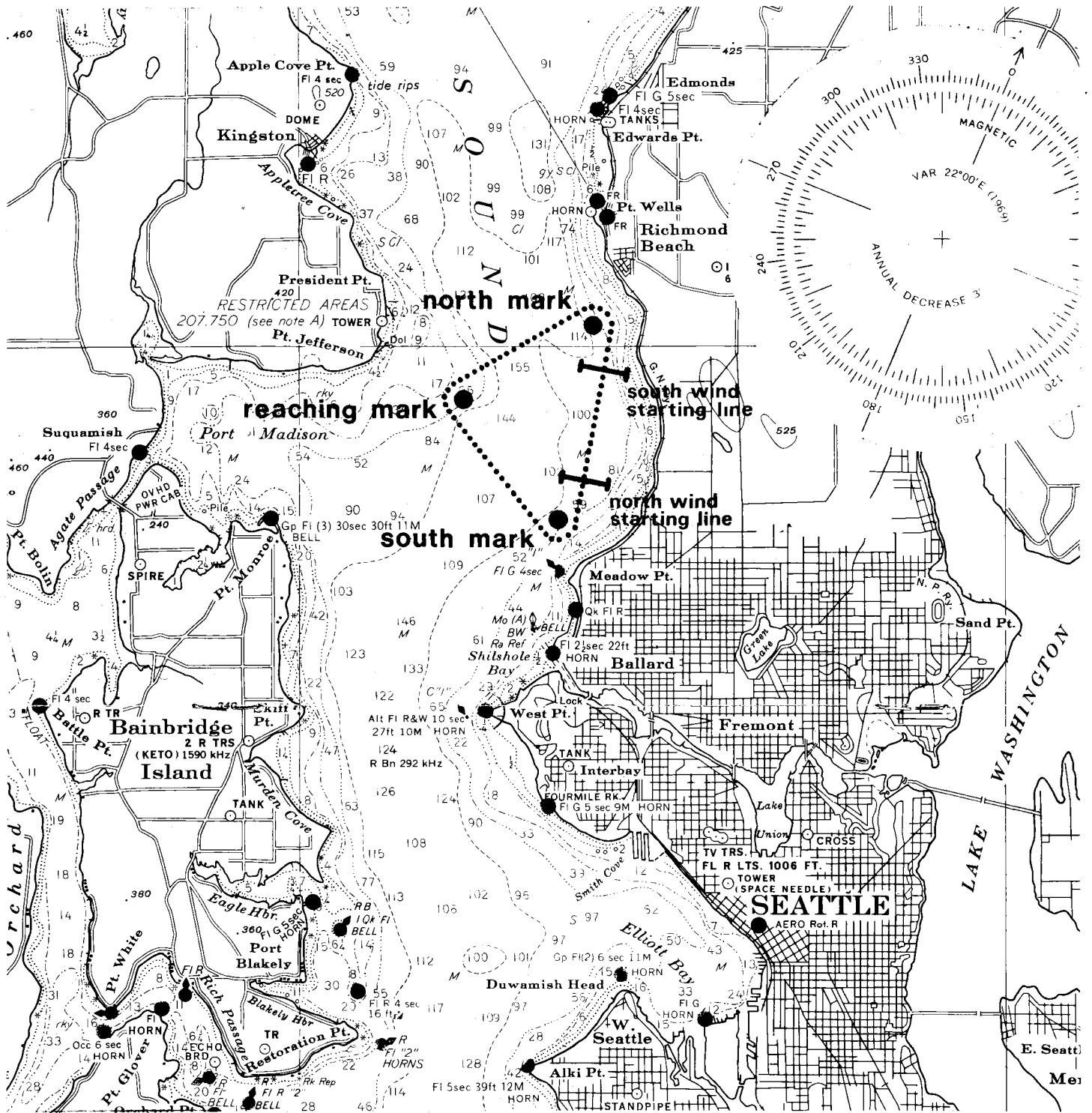
THE GIRTH DIFFERENCE, d IN THE FORMULA, SHALL BE MEASURED IN THE TRANSVERSE PLANE, VERTICALLY, AT 0.55 L.W.L. FROM THE FORE END, AND SHALL BE THE SUM OF THE DIFFERENCES BETWEEN THE SKIN GIRTH AND CHAIN GIRTH, MEASURED ON THE TWO SIDES OF THE YACHT, FROM THE MARK ON THE COVERING BOARD d TO CORRESPONDING POINTS IN THE HULL SURFACE AT A LEVEL 12.5 PER CENT OF THE CLASS RATING BELOW THE WATERLINE.

The Rating Rule

No other exceptions shall be permitted. All portions of the International Rule, except as noted above, shall be strictly observed. The owner of each yacht shall, upon request, produce a Measurement Certificate. Sails and spars must measure-in to said certificate in all respects. If any major changes in the hull or any changes in the rig have been made, a current certificate must be filed.

RACE ENTRANTS

Name	Owner(s)	Skipper	Sail	Hull	Yacht Club
ALARM	Teeter Fobes Rubicam	R. Enersen	N-66	Red	SYC
ALANA	Hillborn	Same	KC-11	White	RVicYC
BUZZY II	Pelly Burnham	M. Pelly	KC-6	White	SYC
BUZZY III	W. Lyda	Same	KC-25	Coral	SYC
CA-VA	S. Miller P. Miller	S. Miller	KC-12	Lt. Blue	RVanYC
ECLIPSE	B. Brazier	Same	KC-30	Dk. Blue	TacYC
EROS	Eagon Haselton McFarlane	R. McFarlane	KC-20	Ebony	SYC
EXIT	Ivie Way Welsh	N. Welsh	US-90	White	CYC
GOOSE	Wertheimer	Same	US-81	White	CYC
HECKATE	W. Rowhader	Same	KC-14	Brown	EYC
INDIAN SCOUT	L. Sandwick K. Varco	L. Sandwick	US-66	White	
JUNO	Horn	Same	KC-15	Lt. Blue	RVicYC
LANORIA	J. Todd	Same	N-84	White	RVicYC
LIGHT SCOUT	R. Wester D. Wester Pearson	R. Wester	US-75	White	SYC
LULU	C. Ross	Same	US-72	Lt. Blue	CYC
MARGUERITHA	Button Safely	B. Button	N-81	White	SYC
MAY BE VII	Nichols Vynne	E. Vynne	US-87	Varnished	CYC
OSLO	Hans-Otto Giese	Same	N-22	Ivory	CYC
RISKEN	C. Jensen D. Jensen Ambrose	C. Jensen	N-74	White	SYC
SAGA	B. Buursma	Same	US-73	White	CYC
ST.FRANCIS IV	Apollo Sy.	Blackaller	US-95	White	St.FranYC
STAR WAGON	C. Cavanagh	Same	US-79	Lt. Blue	RVicYC
TUSCAN	Fantosi	Same	N-61	White	SYC
VOLPONE	F. Glenn	Same	US-47	Yellow	CYC
YAM SING	K. Giles	Same	KC-31	Gray	RVanYC
YLLIAM VIII	B. Anderson	B. Taylor	Z-42	Maroon	CYC



COURSES

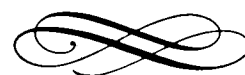
Course I shall consist of once around a triangle, then windward to the first mark, leeward, then a short beat to finish. Distance approximately 10 nautical miles with the start in a NORTHERLY direction and all marks passed on the port side. Finish at the start line.

Course II shall consist of once around a triangle, then windward to the first mark, leeward, then a short beat to finish. Distance approximately 10 nautical miles with the start in a SOUTHERLY direction and all marks passed on the starboard side. Finish at the start line.

MARKS

Marks will be flags on a floating buoy and marked in the near vicinity by a stake boat.

RULES	Current NAYRU and IYRU Rules except as amended herein.
START AND FINISH	Will be judged by the bow.
SIGNALS	As prescribed in Rules 4 through 9 except as modified herein: RECALL will be signalled only by one horn blast for each yacht starting early and the Race Committee will attempt to hail the early yacht. All yachts should assist in passing on the hail of the Race Committee. No visible signal will be made. POSTPONEMENT will be for indefinite multiples of fifteen minutes. End of the postponement will be signalled by lowering the postponement signal approximately fifteen minutes before the starting signal.
START AND FINISH LINES	The start and finish will be between a flag on the Committee Boat and an outer mark. The race may be shortened at the discretion of the Race Committee at any mark. No race will be shortened after completion of the first triangular segment.
STARTING TIME	Starting time for each race will be as shown herein depending upon wind and other relevant conditions. No race will start earlier than that noted but races may be postponed or rescheduled subject to verbal revision by the Race Committee. COURSE SIGNAL will be displayed approximately 15 minutes before the start accompanied by firing of the gun. WARNING SIGNAL will be a White Flag hoisted 10 minutes before the start. PREPARATORY SIGNAL will be a Blue Flag hoisted 5 minutes before the start. START SIGNAL – Red Flag will be hoisted. Warning and preparatory signals will be lowered thirty seconds before new signal is hoisted. A gun will call attention to hoisting of all flags.
TIME LIMIT	Time limit for each race will be three hours.
POINT SCORING	Point scoring will be by the low point scoring system with $\frac{3}{4}$ of a point awarded to the first place boat and points equal to their finishing place awarded to all other finishers. A DNF will be awarded points equal to the number of entrants plus one. A DSQ will be awarded points equal to the number of entrants plus two. The winner will be declared on the basis of the lowest total points. In the event of a tie, the yacht beating the other the greatest number of times will be winner. If a tie still exists, the number of firsts, seconds, etc., will be used as a basis to break the tie. If a tie still exists, a flip of a coin will decide.
PROTESTS	Must be filed two hours after the protesting yacht finishes the last race of the day. Protest forms will be available from the Race Committee and at the Corinthian Yacht Club. Protesting yacht must notify the protested party verbally upon returning to the dock and submit protest forms in duplicate to the Race Committee.
SPECIAL INSTRUCTIONS	All yachts are requested to report to the Race Committee upon reaching the starting line, signifying they are ready to race.



YACHT	SAIL	RACE 1	RACE 2	RACE 3	RACE 4	RACE 5	TOTAL
ALARM	N-66						
ALANA	KC-11						
BUZZY II	KC-6						
BUZZY III	KC-25						
CA-VA	KC-12						
ECLIPSE	KC-30						
EROS	KC-20						
EXIT	US-90						
GOOSE	US-81						
HECKATE	KC-14						
INDIAN SCOUT	US-66						
JUNO	KC-15						
LANORIA	N-84						
LIGHT SCOUT	US-75						

LULU	US-72						
MARGUERITHA	N-81						
MAY BE VII	US-87						
OSLO	N-22						
RISKEN	N-74						
SAGA	US-73						
ST.FRANCIS IV	US-95						
STAR WAGON	US-79						
TUSCAN	N-61						
VOLPONE	US-47						
YAM SING	KC-31						
YLLIAM VIII	Z-42						

TROPHIES

The winning yacht will be awarded The North American Six-Metre Championship Trophy. This perpetual trophy is to be retained by the winning yacht until the next North American Series. Skipper and crew of the yacht will be awarded take-home trophies indicating their place of finish.

Skipper and crew of yachts finishing second through fifth will receive take-home trophies inscribed with their place of finish.

All skippers and crew entering the Series will receive a memento for their participation.

Daily first awards for each race have been donated by local business organizations:

Northwyn Sailmaking Co.
1009 NE Boat Street
(sail repair assistance available)

Fisheries Supply Co.
Pier 55
(fittings and sailing gear available)

Windward Mark
6303 Seaview NW
(fittings and sailing gear available)

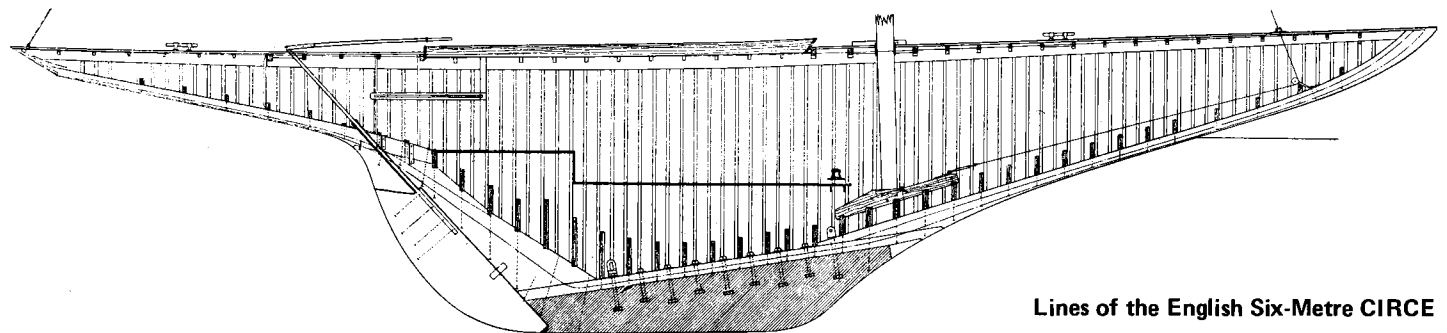
Farwest Sportswear, Inc.
1100 Poplar Place South
5 float jackets to each crew member of the winning yacht of the Series.

Each crew member of the yachts placing first, second, and third in the Series will be awarded mounted photographs of their yacht by Jean Classom.

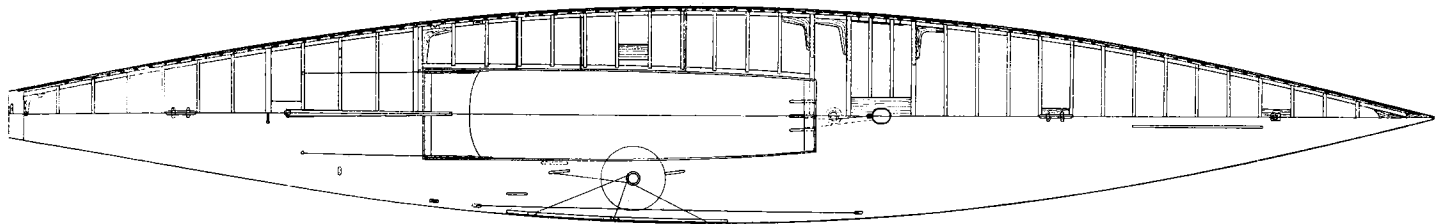
REGATTA COMMITTEES:

RON McFARLANE	General Chairman
CARL HOSTETTER	Race Chairman
GARY HORDER	Chief Judge
KIM FRINELL	Measurer
BILL BUTTON	Social
RAY WESTER PAULA BUURSMA	Program
OWEN HASELTON	Trophies
BOB CADRANELL	Moorage

The Regatta Committee acknowledges the sincere participation of the Corinthian and Seattle Yacht Clubs, Mr. and Mrs. Wood Lyda, and Mr. Bill Taylor for their contribution to the success of this Series.



Lines of the English Six-Metre CIRCE



IF IT IS DESIRED TO CHANGE THE RULE, AT LEAST THREE YEARS NOTICE OF SUCH DESIRE SHALL BE GIVEN AND FAVORABLY SECONDED BY A MAJORITY OF THE NATIONS.

The Rating Rule

CANADIAN-AMERICAN INTERNATIONAL TEAM RACES

GENERAL INSTRUCTIONS

A match series of three races will be held after the North American Championship Series. Teams will be made up of three or four yachts representing each country. The exact number will be fixed in a conference of the Race Committee and authorized representatives from each country. Each country will select its own entrants.

COURSES

Race course will consist of a triangle, windward, leeward, windward to start. Distance approximately 5 nautical miles.

STARTING TIME

As per program and verbal instructions of the Race Committee. Starting signals as noted earlier in this program.

TIME LIMIT

A time limit of two hours will apply with no race to be shortened.

POINT SCORING

As per NAYRU Team Scoring.

RULES

Current NAYRU Team Race Rules will apply.

TROPHY

The Perpetual Canadian-American Team Race Trophy.

